

SPONSORED BY

INFORMATION

REGISTRATION

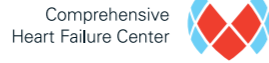
SFB 688

Comprehensive Heart Failure Center



**Joint Symposium of the Collaborative Research Center (SFB) 688 and the Comprehensive Heart Failure Center Würzburg**

**SFB 688** Mechanismen und Bildung von Zell-Zell-Wechselwirkungen im kardiovaskulären System



Organizers: Georg Ertl, Stefan Frantz, Christoph Kleinschnitz, Bernhard Nieswandt

Organized in cooperation by the Deutsche Akademie der Naturforscher Leopoldina, Halle (Saale), Collaborative Research Center 688, IZKF (Interdisziplinäres Zentrum für Klinische Forschung Würzburg), Comprehensive Heart Failure Center.

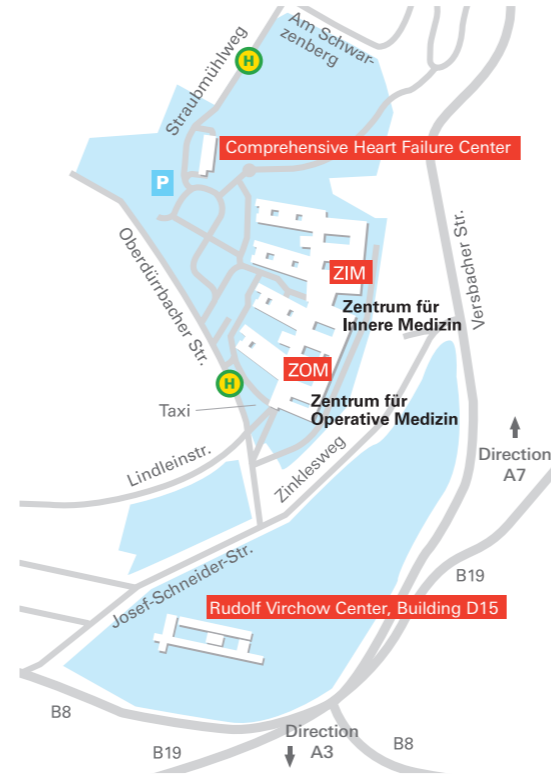
Supported by the Rudolf Virchow Center



Venue: Rudolf Virchow Center, DFG-Research Center for Experimental Biomedicine, Josef-Schneider-Str. 2 Building D15 D-97080 Würzburg

**Date: June 21/22, 2012**

Deutsches Zentrum für Herzinsuffizienz Würzburg/  
Comprehensive Heart Failure Center  
Straubmühlweg 2a, Building A9, D-97078 Würzburg  
Tel: +49 (0) 931 / 201-46333  
E-Mail: dzhi@klinik.uni-wuerzburg.de  
www.dzhi.de



sponsored by



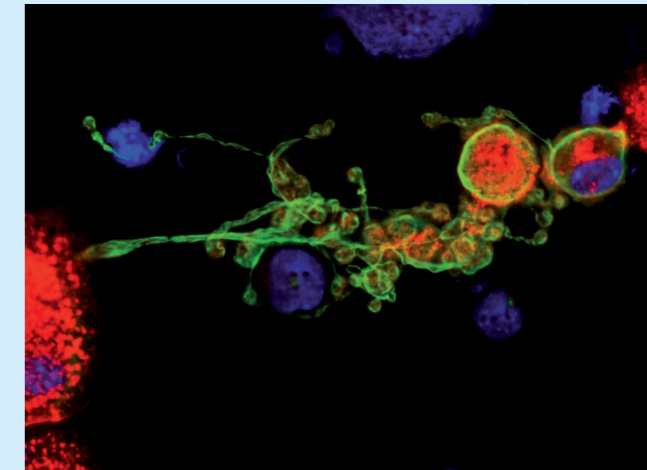
**Joint Symposium of the Collaborative Research Center (SFB) 688 and the Comprehensive Heart Failure Center Würzburg**

**VI. Cardiovascular Healing Symposium**

„Cell-cell interaction in cardiovascular damage and healing“

June 21/22, 2012

unter Schirmherrschaft der Deutschen Gesellschaft für Kardiologie



Die Veranstaltung ist bei der Deutschen Gesellschaft für Kardiologie und der Bayerischen Ärztekammer zur Zertifizierung eingereicht.

## PROGRAM

### Thursday, June 21

#### 14.00–14.30 Welcome addresses

*Jörg Hacker, President, Leopoldina, Halle*  
*Isabell Hahn, BMBF, Bonn*  
*Matthias Endres,*  
*Charité Berlin, President DSG*  
*Alfred Forchel,*  
*President, University of Würzburg*  
*Thomas Hünig,*  
*Vice Dean, Medical Faculty, Würzburg*  
*Georg Ertl, Speaker, CHFC Würzburg,*  
*President German Cardiac Society*  
*Bernhard Nieswandt,*  
*Speaker, Collaborative Research Center*  
*(SFB) 688, Würzburg*

#### 14.30–16.00 Session I: Thrombosis – part I

Chairs: Antje Gohla (Würzburg);  
Johann Heemskerk (Maastricht)

*Stephen P. Watson (Birmingham, UK):*  
ITAM signaling in platelets and its  
role in thrombosis and development

*Bernhard Nieswandt (Würzburg):*  
Arterial thrombosis:  
Novel mechanisms and targets

*Karl-Heinz Peter (Melbourne, AUS):*  
Activation-specific single-chain antibodies  
as platelet inhibitors and targeting tools

16.00–16.30 Coffee break

#### 16.30–18.00 Session I: Thrombosis – part II

Chairs: Jürgen Schrader (Düsseldorf);  
Simon de Meyer (Leuven, BE)

*Wolfgang Bergmeier (Chapel Hill, USA):*  
Key regulators of Ca<sup>2+</sup> signaling  
in platelets

*Thomas Renné (Stockholm, SE):*  
Activation of the contact system in  
thrombosis and inflammation

*Guido Stoll (Würzburg):*  
Thrombo-inflammation in acute stroke

#### 18.00–18.45 Key note lecture

Chairs: Joachim Thiery (Leipzig);  
Guido Stoll (Würzburg)

*Barry Coller (New York, USA):*  
GPIIb/IIIa antagonists: Historical  
perspective and future direction

18.45–21.00 Get together and poster session

### Friday, June 22

#### 08.00–09.30 Session II: Injury mechanisms in cardiovascular diseases – part I:

Chairs: Ursula Ravens (Dresden);  
Georg Ertl (Würzburg)

*Thomas Thum (Hannover):*  
miRNA and cardiac remodeling after MI

*Katrin Schäfer (Göttingen):*  
Effects and mechanisms of the adipokine  
leptin during vascular remodelling

*Michaela Kuhn (Würzburg):*  
Natriuretic peptides and cardiac remodeling

09.30–10.00 Coffee break

#### 10.00–12.00 Session II: Injury mechanisms in cardiovascular diseases – part II:

Chairs: Johann Bauersachs (Hannover);  
Peter Jakob (Würzburg)

*Wolfgang Bauer (Würzburg):*  
Functional cardiovascular MR-Imaging  
in the mouse

*Ruth Strasser (Dresden):*  
Heart failure: novel mechanisms

*Leon De Windt (Maastricht, NL):*  
miRNA in cardiac hypertrophy

*Martin Lohse (Würzburg):*  
Signaling pathways in cardiac hypertrophy

12.00–13.00 Lunch and poster session

#### 13.00–14.30 Session III: Interactions between the cardiovascular and the immune system – part I

Chairs: Malte Kelm (Düsseldorf);  
Ruth Strasser (Dresden)

*Steffen Massberg (Munich):*  
Crosstalk of immune cells and platelets

*Stefan Frantz (Würzburg):*  
Cardiac remodeling and the immune  
system

*Douglas Mann (St. Louis, USA):*  
Cytoprotective effects of innate immunity

14.30–15.00 Coffee break

#### 15.00–16.30 Session III: Interactions between the cardiovascular and the immune system – part II

Chairs: Heinz Wiendl (Münster);  
Alma Zernecke (Würzburg/Munich)

*Anna Planas (Barcelona, ES):*  
Danger signals and innate immunity  
in ischemic stroke

*Constantino Iadecola (New York, USA):*  
Neurovascular-immune interactions  
in models of Alzheimer's disease

*Christoph Kleinschnitz (Würzburg):*  
Regulatory T cells in ischemic stroke

16.30–17.00 Coffee break

#### 17.00–18.30 Session IV: Clinical Translation: Hopes, Failures, and Success

Chairs: Helmuth Steinmetz (Frankfurt);  
Ulrich Walter (Mainz)

*Gerhard Dickneite*  
*(CSL Behring GmbH, Marburg):*  
FXIIa: a clinical target?

*Ulrich Dirnagl (Berlin):*  
Immunodepression in stroke: From  
preclinical concepts to clinical trials

*Roland Veltkamp (Heidelberg):*  
Novel anticoagulants – a Neurologist's  
perspective

18.30 Final remarks

*Georg Ertl,*  
*Bernhard Nieswandt*

## REGISTRATION

I will attend the „Joint Symposium of the Collaborative Research Center (SFB) 688 and the Comprehensive Heart Failure Center Würzburg“ June 21 and 22 2012 in Würzburg.

**Fax: +49 (0)931 / 201-646333**

Title

Name

Surname

Street

Zip code, City

Phone, Fax

e-mail

If you need any further information, please do not hesitate to contact  
Deutsches Zentrum für Herzinsuffizienz Würzburg/  
Comprehensive Heart Failure Center  
Straubmühlweg 2a, Building A9, D-97078 Würzburg  
Tel: +49 (0) 931 / 201-46333  
E-Mail: dzhi@klinik.uni-wuerzburg.de  
www.dzhi.de

**Deadline: May 21 2012**